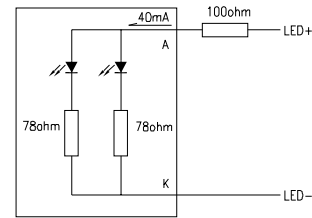
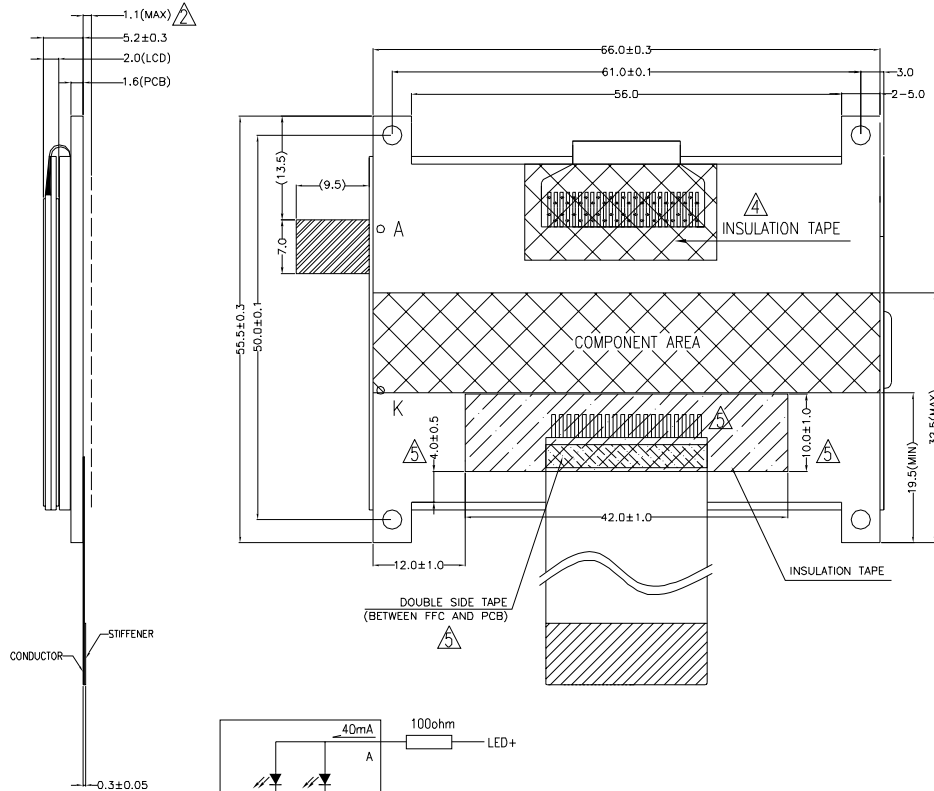
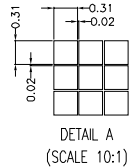
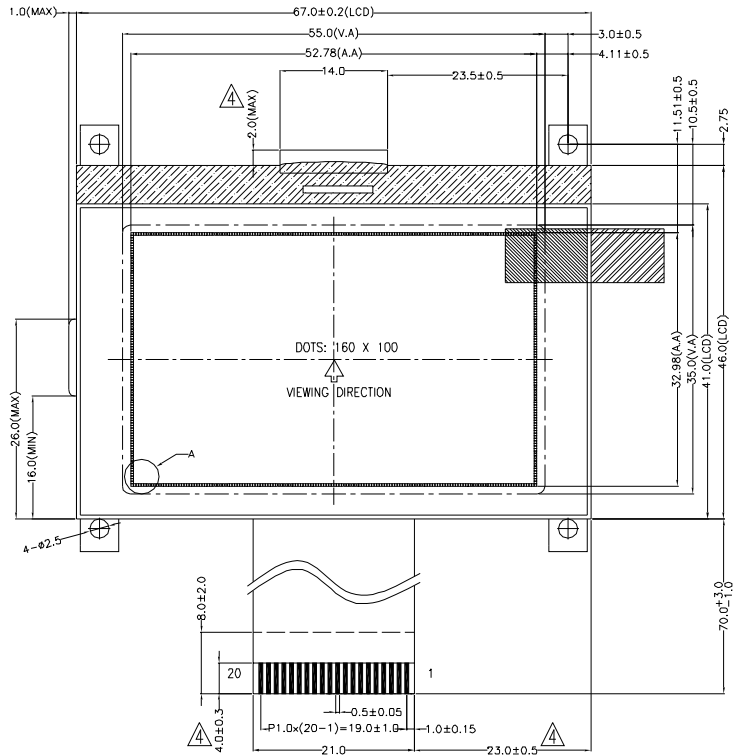


PIN ASSIGNMENT

NO.	SYMBOL
1	NC
2	VDD
3	DB0
4	DB1
5	DB2
6	DB3
7	DB4
8	DB5
9	DB6
10	DB7
11	XCS
12	A0
13	/WR
14	/RD
15	RST
16	VSS
17	LED+
18	LED-
19	NC
20	NC



BACKLIGHT CIRCUIT DIAGRAM

NOTES:

- LCD TYPE: FSTN.
- VIEWING DIRECTION: 6 O'CLOCK.
- DRIVE METHOD: 1 / 100 DUTY, 1 / 11BIAS.
- POLARIZER MODE: TRANSPARENT / POSITIVE.
- LCD OPERATING VOLTAGE: 13.0V.
- VDD: 3.0V(TYP.).
- OPERATING TEMP.: -10°C ~ 60°C.
- STORAGE TEMP.: -40°C ~ 70°C.
- BACKLIGHT: 2-LED(4.2V,40mA).
- CONTROLLER: UC1628C.
- ALL UNMARKED TOLERANCES: ±0.3mm.

VER.	REVISED DESCRIPTION	REVISER	DATE
05	MOVE UP THE PADS OF THE FFC; MODIFY THE SIZE OF THE INSULATION TAPE; ADD DOUBLE SIDED ADHESIVE BETWEEN PCB AND FFC.	JACK	2020.04.10
04	MODIFY THE LED OPERATING VOLTAGE; MODIFY DIMENSION OF FFC BENDING; ADD BACKLIGHT CIRCUIT DIAGRAM; MODIFY THE DESIGN OF SOLDERING AREA; MODIFY THE TOLERANCE OF FFC CONTACT SIDE; MODIFY THE TOLERANCE FROM LCM O.D TO FFC.	RITA	2019.08.19
03	MODIFY THE RANGE OF STORAGE TEMP.	JACK	2019.05.15
02	MODIFY THE MAXIMUM ALLOWABLE HEIGHT OF THE COMPONENTS AREA	JACK	2019.05.05
01	FIRST ISSUE	JACK	2019.04.24



MULTI-INNO TECHNOLOGY CO.,LTD.

DRAWN BY:	JACK	2019.04.24	SCALE : 1/1	MODULE P/N:	M160100A-G
CHECKED BY:			UNIT:	mm	DESCRIPTION:
APPROVED BY:					GRAGHC MODULE
VERSION NO:	05				